

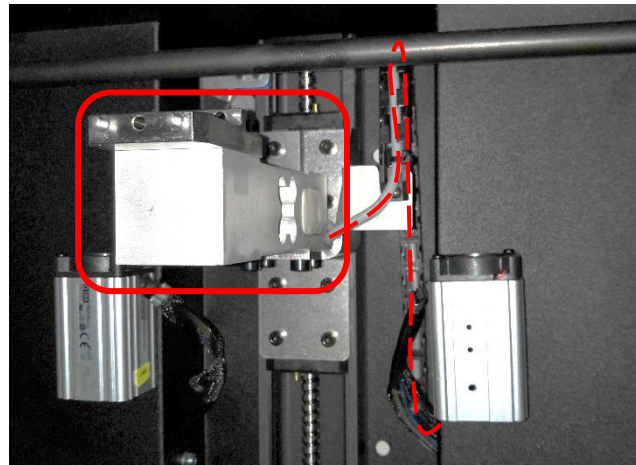
## Exchange the Load Cell

<b>Applicable for:</b> – x50	<b>Required Tools:</b> – 4mm Allen key      – 5mm Allen key      – Wire cutting plier	<b>Recommended Personal Protective Equipment:</b> – N/A	<b>Addressee of This Document:</b> – Main User – Customer Support – Technician
---------------------------------	--	--	---

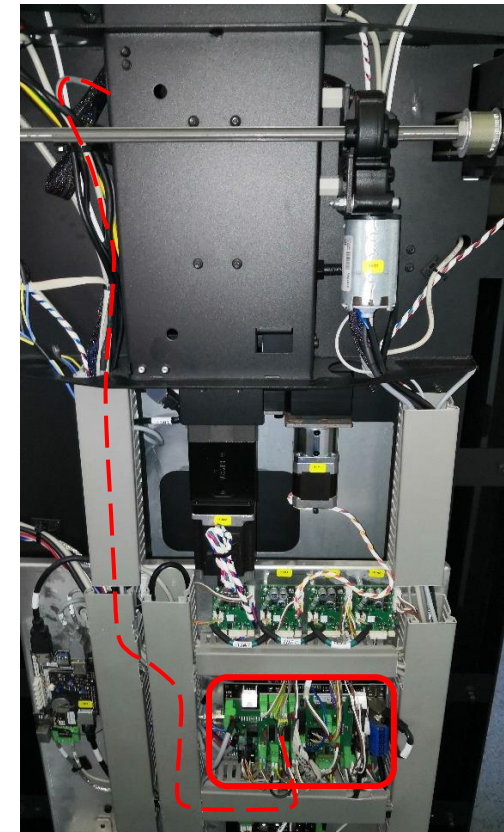
**Step 1:** Switch off the printer and remove the power cable. Use **Guide0057** for instructions on removing all three back covers.

**Step 2:** Remove all peripheral equipment (build platform, ASM safety cover, cutting blade, drip plate and Reservoir if present) from the machine and insert the Calibration glass.

**Step 3:** Identify the Load Cell inside the building area of the printer and confirm the path of the cable towards the rear of the frame.



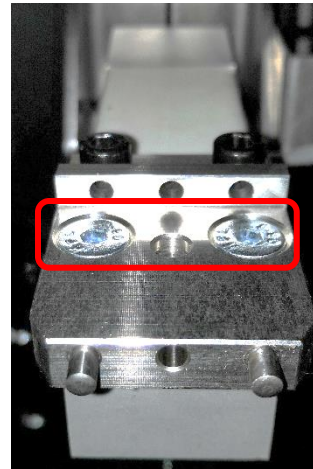
**Step 4:** Follow the Load Cell cable from the top, where it exits the inside print area, via the cable channels through to the IO-Board where it is connected.



**Step 5:** Unplug the Load Cell cable from the IO-Board and guide it through to inside the printing area. Remove the cable also from the internal cable chain.



**Step 6:** Remove the two securing Allen screws of the build platform holding plate and take this out of the machine.



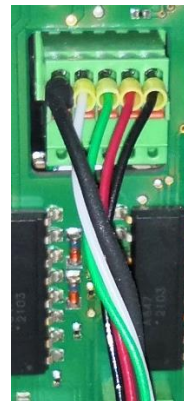
**Step 7:** Whilst supporting the Load Cell, remove the four Allen screws from underneath the Load Cell mounting plate. Remove the Load Cell from the printer.



**Step 8:** Install the replacement Load Cell in the reverse removal order:

- **Secure onto the mounting plate** with the 4 Allen screws
- **Secure the build platform holder** with the 2 Allen screws
- **Guide the Load Cell cable** through to the rear of the frame
- Secure the **cable in the cable chain**
- Secure the rest of the **cable in the cable channels**.

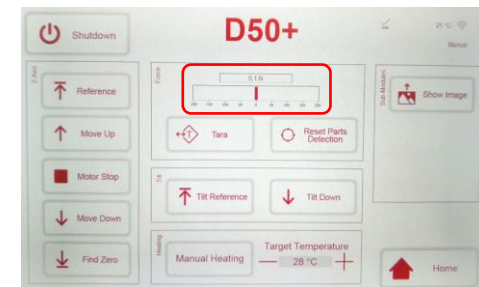
**Step 9:** Connect the Load Cell cable to the IO-Board. Ensure that the cable order in the plug is as follows:



**Functionality Check:**

Reinstall the ASM protective plate, reconnect the power cable and power on the printer.

Navigate to the “Manual Mode” menu to verify that the Load Cell is responding to manual applied forces by pushing up or pulling down on it.



**Note:** When pushing up, the virtual dial should move in the negative direction. When pulling down, the dial should move in the positive direction.